



The PumpHouse Theatre

Technical Information

Theatre Dimensions

Stage Dimensions

| | |
|-------------------------|---|
| Width of Stage | 10.6 metres |
| Depth of Stage | 7.5 metres |
| Stage Height | 4.2 metres (to underside of curtain tracks) 4.57 metres (to lighting grid) |
| Height - Floor to Stage | 0.6 metres (from auditorium floor to stage) |

Stage Entrances

| | |
|----------------------|--|
| Prompt Side | 0.76 metres (from side door) 3.4 metres (from front of stage) |
| Opposite Prompt Side | 1.8 metres (from side door) 2.9 metres (from front of stage) |

Loading Dock

| | |
|--------|---|
| Height | 2 metres (door to theatre 2.5 metres high @ peak of arch) |
| Width | 2.3 metres wide |

Seating

| | |
|--------------------|---|
| Fixed | 123 |
| Removable – Stalls | 53 |
| Balcony | 2 x 16 seats (suitable for adults only. Conditions apply) |
| Total | 192 (including 2 x House Seats per performance) |

Wings

- None (Black Box) – can be set with tabs

Stage Rake

- The stage is not raked

Miscellaneous

- Back Stage Relay integrated with Hearing Loop
- Stage Manager's Talk Back System Hansen (4 stations)





Audio Equipment

Unless otherwise stated the following audio equipment is included as standard with your hire.

Please do not attempt to change speaker/amplifier configuration without first speaking with a PumpHouse technician.

Mixing Consoles

- Allen & Heath QU-24 digital mixer
- Mackie Pro FX12 mixer (available on request)

Amplifiers

- Proel PRL900
- Alto x23 Crossover
- Portable Amp Phonic Max1500
- B52 US-1200
- Amplifier input section is dual XLR 3-pin balanced and 6.3mm mono jack

Speakers

- 2 x Proel TFL 12P8 Flying Series (300 watt continuous 600 watt peak)
- 2 x Proel TFL 115SP4 (Sub-Woofer - 400 watt continuous 800 watt peak)
- 2 x Proel TFLV 10P4
- 2 x Turbosound Milan M12 1100 Watt powered speakers (additional charges apply)
- Speaker connections and amplifier outputs are NEUTRIX.

Microphones (charges apply)

- 4 x Sennheiser System Wireless microphones
 - handheld, lapel or head-worn options
- 1 x Audio Technica ATM650-Hypercardioid Dynamic
- 2 x Audio Technica ATM510-Cardioid Dynamic
- 1 x Audio Technica AT2020-Cardioid Condenser

CD Player

- Yamaha CD-S300 – includes USB/IPOD input.

Visual equipment

- Sanyo Multi Media Projector
- 32" Veon LCD L.E.D TV

Grand Piano

- Blüthner Grand Piano
- Piano Tuning (if required) \$150.00 - \$180.00

Note: Only The PumpHouse certified technicians are permitted to tune the piano. We use Jenkins Piano Tuners in Milford.





Lighting Equipment

Unless otherwise stated the following lighting equipment is included as standard with your hire.

Control Systems

- 1 x Theatrelight CueMaster 120
- 1 x Theatrelight DMX-LINK Soft Patch

Dimmers

- 5 x Pulsar data-packs = 84 channels (hard wired)
- 1 x Portable Theatrelight TL PPK 12-10

Lighting Fixtures

- 6 x 1000w Selecon Pacific Zoomspot 23°-50°
- 2 x 600w Selecon Pacific Zoomspot 23°-50°
- 2 x 1000w Selecon Pacific Zoomspot 90°
- 8 x 1000w Selecon Fresnel
- 2 x 650w Selecon Fresnel
- 10 x 500w Selecon Fresnel
- 4 x 650w Selecon Acclaim 4°-64° PC
- 4 x 1200w Selecon Rama 5°-60° PC
- 8 x 1200w Selecon Fresnel Rama 7°-50°
- 4 x 1000w Selecon Cyc Lui
- 4 x Selecon PLCYC LED Cyc unit
- 7 x 1000w Parcan - Par 64
- 1 x 1200w Selecon Follow Spot

Standard Lighting Rig (no changes to patching or position)

The standard rig must be operational at all times throughout the hire period and should be the only fixtures remaining at pack out.

- 4 x Selecon SL ePAR 180 LED
- 2 x Chauvet SlimPAR Tri 7 IRC

Coal Bunker Studio Lighting/Audio

- 4 x 100w Parcan Par 36
- 2 x Chauvet SlimPAR Tri 7 IRC
- 1 x Theatrelight Starlet 12
- Phonic AM24D - 2 Channels Sound Mixer





Power Supply

Main Supply

- 160 amp three phase

Three Phase Sockets – 32 amp

- 2 x in Dimmer Cupboard
- 1 x in Control Room

Single Phase Sockets – 10 amp

- 12 x on catwalk switched from Control Room
- 14 x In Control Room
- 8 x On Stage
- 4 x Front of Stage
- 4 x Practical over stage switched from Control Room
- 1 x Auditorium (under seat)

Dedicated Audio Sockets – 10 amp

- 8 x In control room
- 4 x on stage
- 2 x on catwalk

Drapes

- 1 x House Curtain – Red
- 3 x Stage Right Tabs - Black
- 3 x Stage Left Tabs - Black
- 1 x On stage Black Curtain
- 1 x Cyclorama

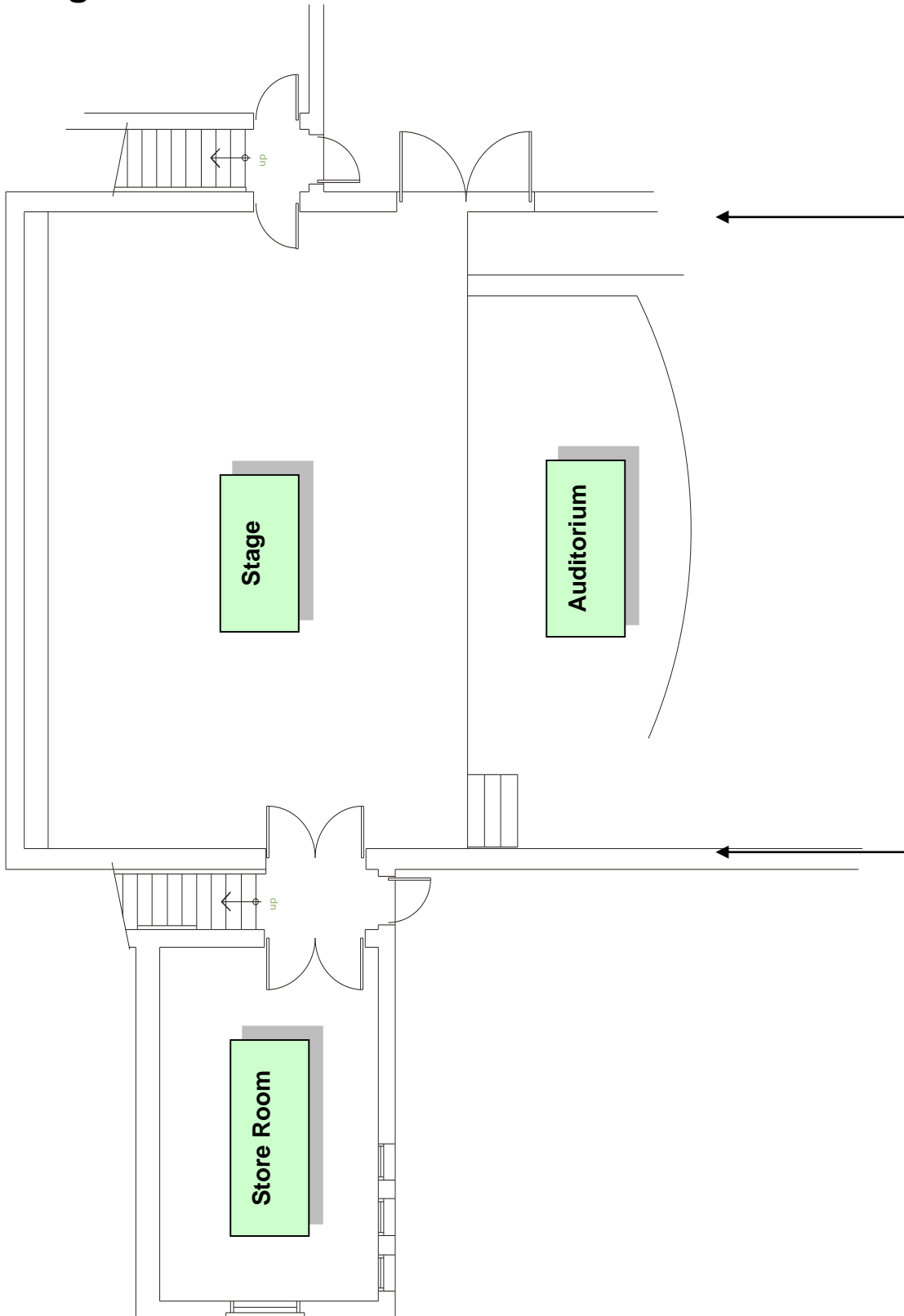
| Drape | Size | Min distance | Max distance |
|------------------|--------------------|--------------|--------------|
| House Curtain | Full stage | 0.97m | 1.5m |
| Stage Right Tabs | 0.7m to 3.0m width | 1.1m | 6.5m |
| Stage Left Tabs | 0.7m to 3.0m width | 1.1m | 6.5m |
| Black Curtain | Full Stage | 4.0m | 7.0m |
| Cyclorama | Full Stage | 4.9m | 7.5m |

- Minimum and maximum distances are as measured from the front of the stage. Minimum Tab positions assumes no House Curtains. Tabs cannot be placed forward of the House Curtain.
- In some cases the position of drapes is restricted by seismic strengthening
- Any combination of drapes can be moved and/or removed. Charges apply.



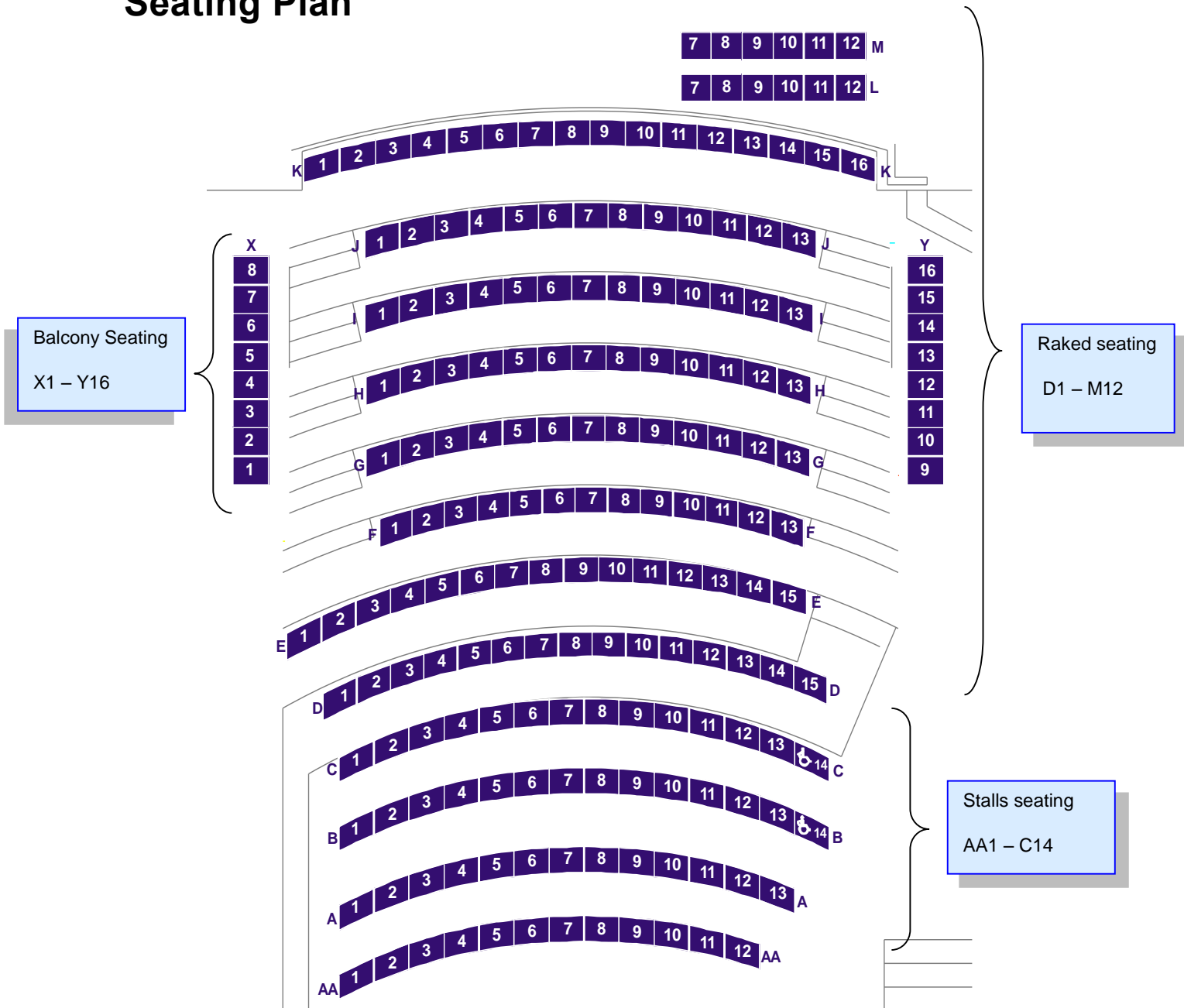


Stage Plan





Seating Plan



STAGE

Seating

| | |
|--------------------|--|
| Fixed | 123 |
| Removable – Stalls | 53 |
| Balcony | 2 x 16 seats. Suitable for adults only. Conditions apply |
| Total | 192 (including 2 x House Seats per performance) |

Last Updated 16 February 2016

