



# The PumpHouse Theatre Technical Information

Revised: 1<sup>st</sup> November 2019

Please ensure that you have the latest version of this document as provided at <http://pumphouse.co.nz/perform/technical-information>

## Genevieve Becroft Auditorium (GBA) Specifications

*The GBA is the PumpHouse's Main Theatre*

### Stage Dimensions – with no drapes set

Width of Stage	10.6 metres
Depth of Stage	7.5 metres
Stage Height	4.2 metres (to underside of curtain tracks) 4.57 metres (to lighting grid)
Height - Floor to Stage	0.6 metres (from auditorium floor to stage)

### Stage Entrances

Prompt Side	0.76 metres (from side door) 3.4 metres (from front of stage)
Opposite Prompt Side	1.8 metres (from side door) 2.9 metres (from front of stage)

### Loading Dock

Height	2 metres (door to theatre 2.5 metres high @ peak of arch)
Width	2.3 metres wide

### Maximum Loadings

#### Stage

- Maximum evenly distributed load of 5 kPa (or approx. 500kg/m<sup>2</sup>)
- Maximum single point load of 2kN (or approx. 200kg)

#### Lighting bars (Refers only to poles with power outlets fitted)

- Maximum load rating of 60 kg/m (e.g. 30kg mover rigged every 0.5m)

*(Full Engineer's Report is available on request)*

### Working at Height Equipment

- Easy Access brand Aluminium Mini-Mobile Scaffold (model MM410) for work over the stage and removeable seating stalls area
- Extension ladder with rubber-soled shoes for work over the raked seating

*No ladders are to be used for working at height over the stage or removeable seating stalls area*

Revised 01/11/19



## Seating

Fixed	123
Removable – Stalls	53
Balcony	2 x 8 seats. Suitable for adults only. Conditions apply.
Total	192 (including 2 x House Seats per performance)

## Wings

- None (Black Box) – can be set with tabs

## Stage Rake

- The stage is not raked

## Miscellaneous

- Back Stage Relay integrated with Hearing Loop
- Stage Manager's Talkback System: 3 wired Hansen beltpacks/headsets (5 stations: Stage Left, Stage Right, Foyer, 2 in Tech Booth)

## Drapes – GBA

- 1 x House Curtain – Red
- 3 x Stage Right Tabs – Black
- 3 x Stage Left Tabs – Black
- 1 x on stage Black Curtain
- 1 x Cyclorama

Drape	Size	Min distance	Max distance
House Curtain	Full stage	0.97m	1.5m
Stage Right Tabs	0.7m to 3.0m width	1.1m	6.5m
Stage Left Tabs	0.7m to 3.0m width	1.1m	6.5m
Black Curtain	Full Stage	4.0m	7.0m
Cyclorama	Full Stage	4.9m	7.5m

- Minimum and maximum distances are as measured from the front of the stage. Minimum Tab positions assumes no House Curtains. Tabs cannot be placed forward of the House Curtain.
- In some cases the position of drapes is restricted by seismic strengthening.
- Any combination of drapes can be moved and/or removed. Charges apply.



## Audio Equipment – GBA

Unless otherwise stated the following audio equipment is included as standard with your hire. Please do not attempt to change speaker/amplifier configuration without first speaking with a PumpHouse technician.

### Mixing Consoles

- Allen & Heath Qu-24 digital mixer
- Mackie Pro FX12 mixer (available on request)

### Amplifiers

- Alto x23 Crossover
- FOH Left & Right: Phonic Max1500
- Sub Left & Right: Ashly KLR-2000
- FOH Centre: Proel PRL900
- Foldback Left & Right: B52 US-1200

*Amplifier input section is dual XLR 3-pin balanced and 6.3mm mono jack*

### Speakers - *Speaker connections and amplifier outputs are Neutrik speakON*

- 2 x Proel TFL 12P8 Flying Series (300 watt continuous, 600 watt peak)
- 2 x Proel TFL 115SP4 (Sub-Woofer – 400 watt continuous, 800 watt peak)
- 2 x Proel TFL 10P4 (foldback speakers – 200 watt continuous, 400 watt peak)
- 2 x Turbosound Milan M12 1100 Watt powered speakers (additional charges apply) – XLR and 6.3mm mono jack inputs

### Microphones

- 4 x Sennheiser System Wireless microphones (additional charges apply)
  - handheld, lapel or head-worn options
- 2 x Audio-Technica ATM510 Cardioid Dynamic Vocal
- 1 x Audio-Technica ATM650 Hypercardioid Dynamic Instrument
- 1 x Audio-Technica AT2020 Cardioid Condenser Instrument
- 2 x Wharfedale Pro KM-3 Cardioid Condenser Instrument
- 1 x Audix f50S Cardioid Dynamic Vocal, with switch

### Miscellaneous

- 2 x Proel Active D.I. Box (DB1-A)
- 2 x Proel TN0804 8-in 4-out 20 metre XLR stage box
- Yamaha CD-S300 CD player – includes USB/IPOD input

### Grand Piano

- Blüthner Grand Piano
- Piano Tuning (if required) \$150.00 – \$180.00

*Note: Only PumpHouse certified technicians are permitted to tune the piano.*

*We use Jenkin Piano Service in Hillcrest.*



## Visual Equipment – GBA

- Epson EB-2250U ceiling-mounted projector – 5000 lumen brightness. Video inputs:
  - VGA + 3.5mm audio jack input from technical booth, and from stage level with VGA extender – 1440 x 900 resolution, 16:10 aspect ratio
  - HDMI input from technical booth – 1920 x 1080 resolution (1080p), 16:9 aspect ratio
- 32" Veon LCD L.E.D TV (available on request)

## Lighting Equipment – GBA

Unless otherwise stated the following lighting equipment is included as standard with your hire.

### Control Systems

- 1 x Theatrelight Cuemaster 120 console
- 1 x Theatrelight DMX-Link Soft-Patch console

### Dimmers

- 5 x Pulsar data-packs = 84 channels (hard wired)
- 1 x Portable Theatrelight TL PPK 12-10

### Lighting Fixtures

- 6 x 1000w Selecon Pacific Zoomspot 23°-50°
- 2 x 600w Selecon Pacific Zoomspot 23°-50°
- 2 x 1000w Selecon Pacific Fixed Beam 90°
- 7 x 1000w Selecon Fresnel
- 4 x 500w Selecon Fresnel (*Barn doors and gels cannot be attached to these fixtures*)
- 4 x 650w Selecon PC Acclaim 4°-64°
- 4 x 1200w Selecon PC Rama 5°-60°
- 8 x 1200w Selecon Fresnel Rama 7°-50°
- 4 x 1000w Selecon Cyc Lui
- 4 x Selecon PLCYC LED Cyc unit
- 7 x 1000w Parcan - Par 64
- 1 x 1200w Selecon Follow Spot

### Standard Lighting Rig (no changes to patching or position)

The standard rig must be operational at all times throughout the hire period and should be the only fixtures remaining at pack out.

- 4 x Selecon SL ePAR 180 LED
- 2 x 650w Selecon Fresnel (*Barn doors and gels cannot be attached to these fixtures*)
- 2 x 500w Selecon Fresnel (*Barn doors and gels cannot be attached to these fixtures*)





## Power Supply – GBA

### Main Supply

- 160 amp three phase

### Three Phase Sockets – 32 amp

- 2 x in Dimmer Cupboard
- 1 x in Control Room

### Single Phase Sockets – 10 amp

- 12 x on Catwalk switched from Control Room
- 14 x in Control Room
- 8 x on Stage
- 4 x front of Stage
- 4 x practical over Stage switched from Control Room
- 3 x Auditorium (2 under seat F7, 1 at top of stage right stairwell)

### Dedicated Audio Sockets – 10 amp

- 8 x in Control Room
- 4 x on Stage
- 2 x on Catwalk

## Lighting and Audio Equipment – Coal Bunker Studio

- 4 x Theatrelight TL-F500 LED Fresnel fixtures
- 4 x Chauvet SlimPAR Tri 7 IRC LED fixtures
- 1 x Theatrelight Starlet 12 lighting control console
- 1 x LF25 Lightfactory 128 DMX channel PC-based lighting control interface  
(*interface provided for self-directed use only*)
- 1 x Phonic AM240 – 2 channel analogue audio mixer
- 1 x Turbosound Milan M12 1100 Watt powered speaker (*XLR and 6.3mm mono jack inputs*)

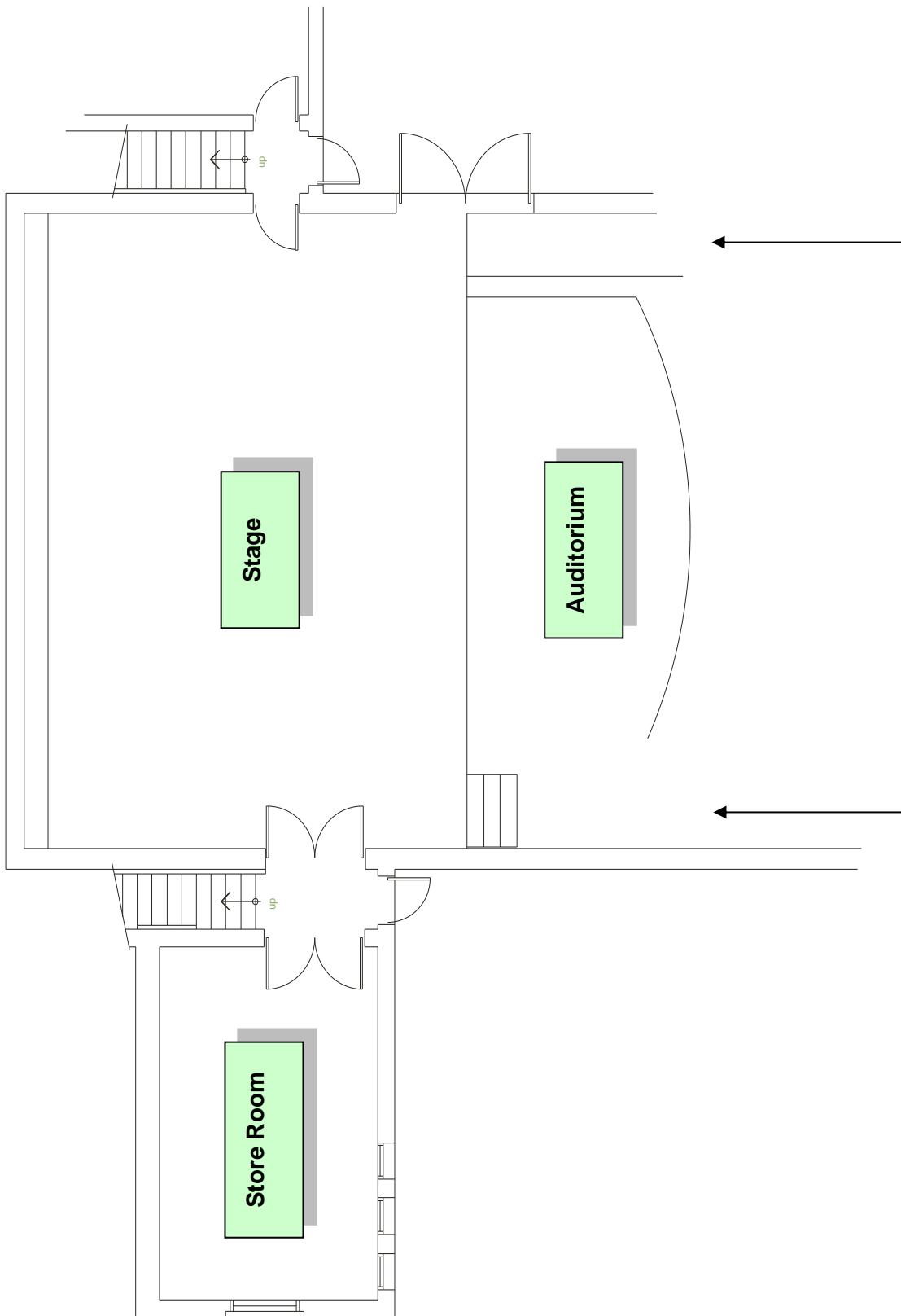
## Power Supply – Coal Bunker Studio

### All non-dimmable, 10 amp single phase sockets

- 4 x ceiling-level
- 3 x wall-mounted

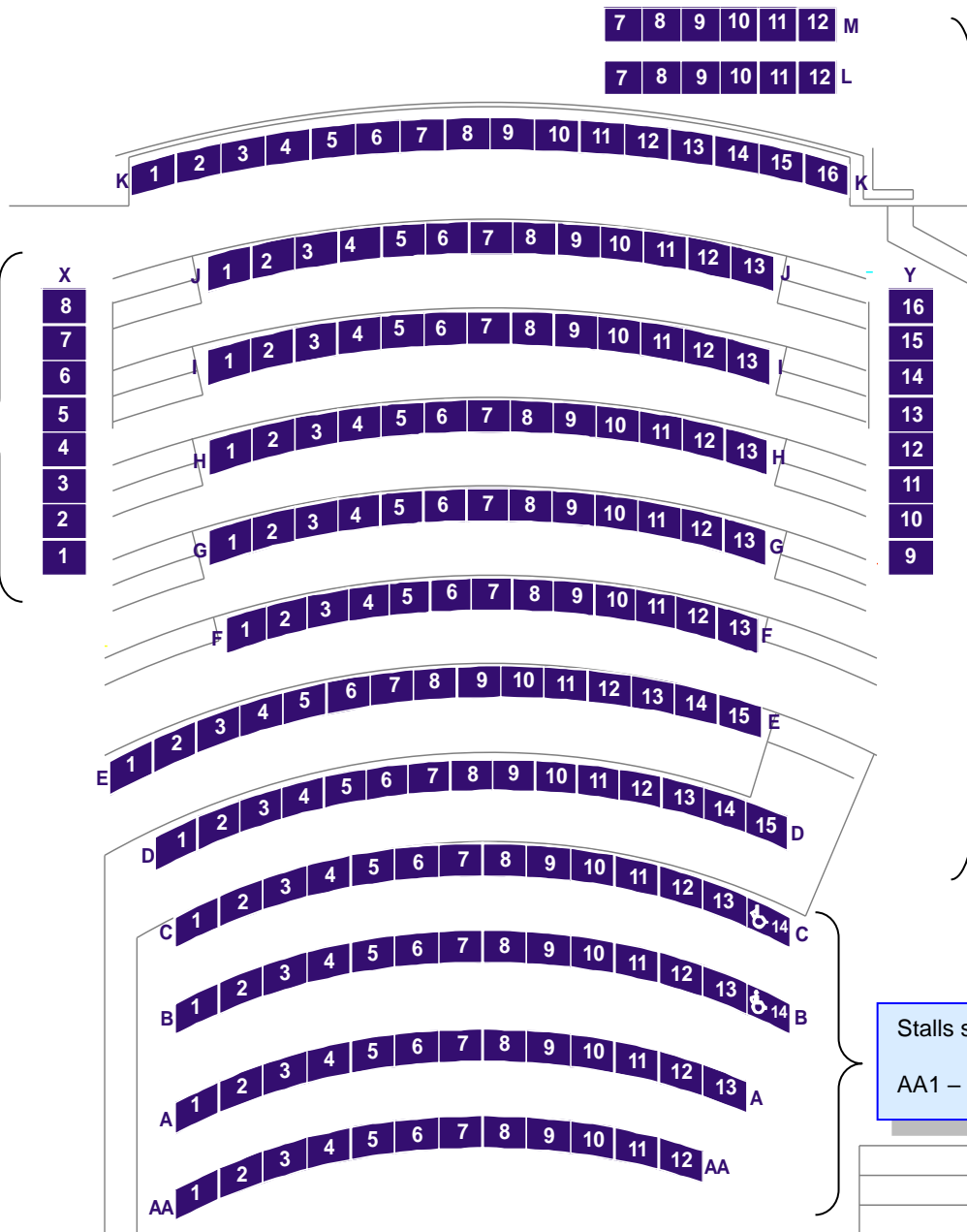


# Stage Plan – GBA





# Seating Plan – GBA



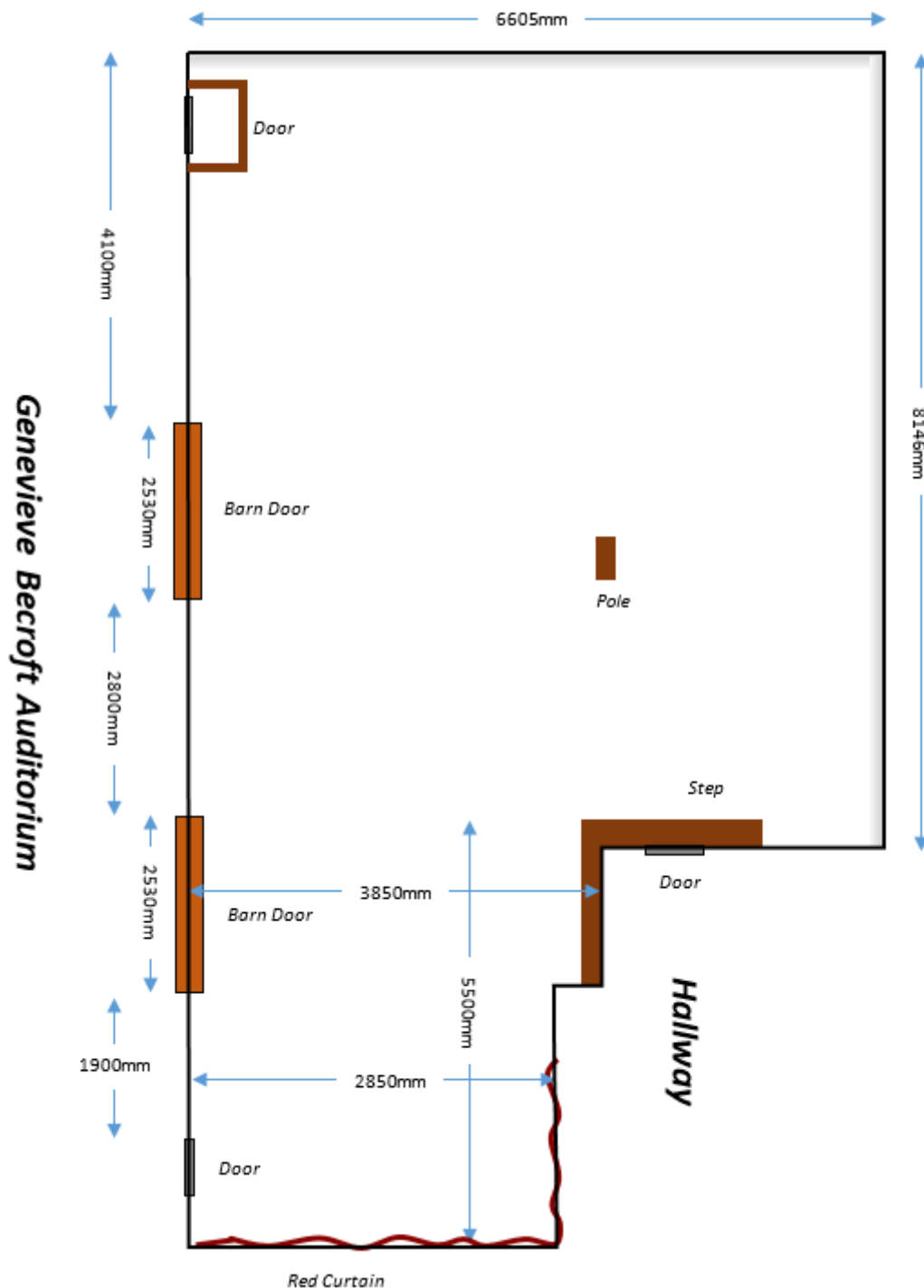
## STAGE

### Seating:

Fixed	123
Removable – Stalls	53
Balcony	2 x 8 seats. Suitable for adults only. Conditions apply
Total	192 (including 2 x House Seats per performance)



## Floor Layout – Coal Bunker Studio



**Seating:** Up to 50 removeable chairs

**Staging/Seat tiering:** Four 1200 x 2400mm moveable platforms – 170mm tall, raiseable to 310mm with legs