

WITNESS FOR THE PROSECUTION

BY AGATHA CHRISTIE

A mid-winter mystery thriller



PROGRAMME

20TH TO 30TH JULY 2023

AT THE PUMPHOUSE, TAKAPUNA

BOOKING : PH 489 8360

WWW.PUMPHOUSE.CO.NZ



Your community theatre

by special arrangement with Samuel French Ltd and NZ Play Bureau Ltd

BENEFITZ
→ Design → Print → Display → Web
→ Future thinkers.

The PumpHouse
Theatre

**ELE
MEN
TAL.**
TAMAKI MAKAUURAU | AKL
A FESTIVAL OF
ARTS
EATS
BEATS

SETTING

London 1953

Act 1 The chambers of Sir Wilfred Robarts QC

Act 2 The Old Bailey, Central Criminal Court, London

Act 3 Scene 1 The outer room of Sir Wilfrid's Chambers

Act 3 Scene 2 The Old Bailey, Central Criminal Court, London

Interval will be half way through Act 2

DIRECTOR'S NOTES

I've been an avid fan of Agatha Christie since I could string letters together to make sense of words!

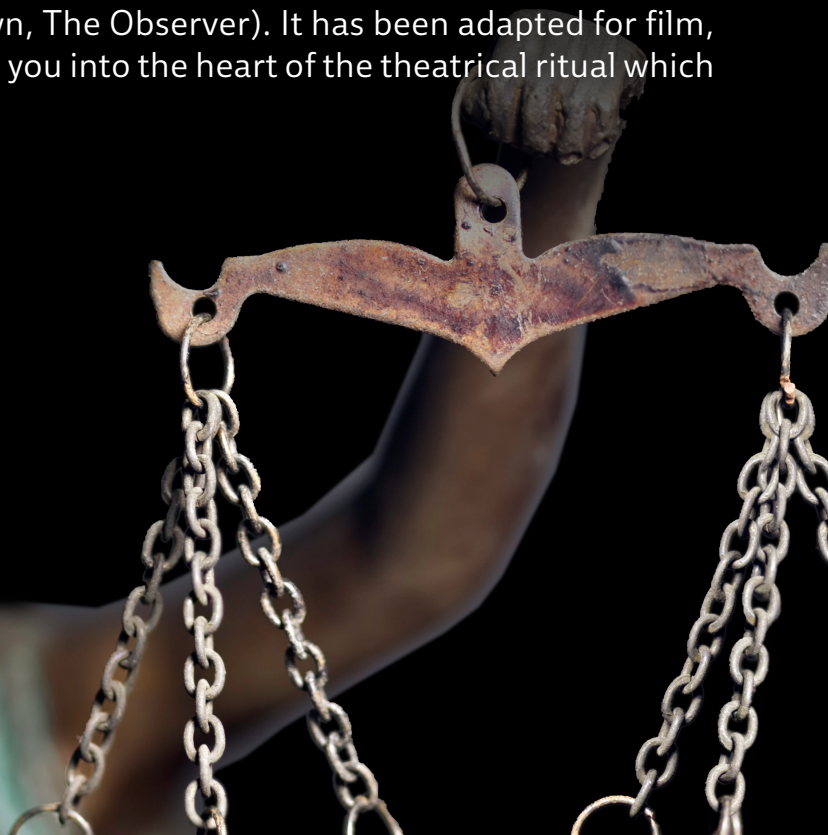
One of my favourite films growing up was Billy Wilder's version of Witness for The Prosecution starring Charles Laughton, Elsa Lanchester, Marlene Detrich and Tyrone Power.

Then when I found out it was also a stage play adapted by Dame Agatha herself from one of her own short stories it immediately went on to the 'to-do' wish list. And here we are...

The play opened in London in 1953 to rave reviews of 'a story that has as many twists as a pigtail.' (Ivan Brown, The Observer). It has been adapted for film, television and radio but to see it live brings you into the heart of the theatrical ritual which is the courtroom.

I look forward to hearing your verdict.

Mags Delaney-Moffatt



THE CAST

(in order of appearance)



Carter - Sir Wilfrid's Chief Clerk - a by the book 'old school' legal clerk
JEFF PHILP



Greta - Sir Wilfred's legal secretary - a young woman with 'modern' views
CHRISTINE BALL



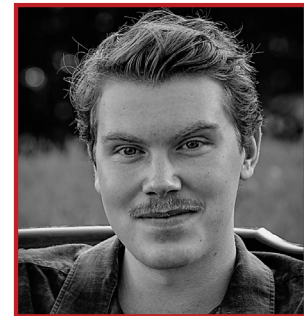
Mr John Mayhew - Solicitor for the Accused - shrewd and precise
CHRIS RAVEN



Leonard Vole - a charming, seemingly naive, inventive young man - The Accused
MAX EASEY



Sir Wilfred Roberts QC a leading defence barrister
STEPHEN ELLIS



Detective Inspector Herne - Investigating police officer from New Scotland Yard
MORGAN SHEFFIELD



Romaine Vole - an enigma - Leonard's wife
SAMANTHA ELLWOOD



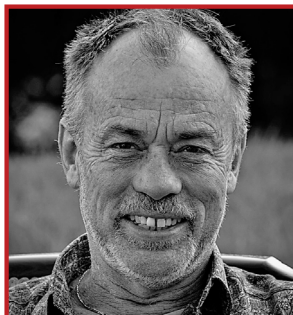
Judge Mr Justice Wainwright - High Court Judge - an iron fist in a velvet glove
CHRISTIAN GEORGE



Miss Myers QC - a leading prosecution barrister
PHILIPPA GRANTHAM



Court Usher - swears in the witnesses and presents evidence items to them
HAE WON CHOI



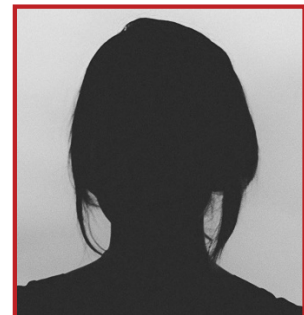
Dr Wyatt - expert witness - police surgeon
JOHN CHARLTON



Janet Mackenzie - Emily French's housekeeper/companion
JESSIE JEFFREYS



Thomas Clegg - expert witness - Forensic laboratory assistant New Scotland Yard
EMMI O'REGAN



The Woman
AMANDA HOLLOWEST

PRODUCTION TEAM

DIRECTION
STAGE MANAGER
PRODUCTION MANAGER
SET DESIGN
LIGHTING DESIGN
SOUND DESIGN
PROPS
COSTUME
CREW
TECH OPERATOR
PHOTOGRAPHY
SET CONSTRUCTION

Mags Delaney-Moffatt
Siobhan Donnelly
James Bell
Mags Delaney-Moffatt
Matt Goldsbro'
Mags Delaney-Moffatt
Siobhan Donnelly & Mags Delaney-Moffatt
Āria Harrison-Sparke & Mags Delaney-Moffatt
Ana Beatriz Picolli Xavier
Niv Verlinsky
James Bell
Brian Jeffreys

THANK YOU!

Shoreside Theatre are grateful to the following people for their support:

Āria Harrison-Sparke, The PumpHouse Theatre, Chocolate and Carnage Theatre, Stage Hire Services, Milford Creative, Vounteering Auckland, Takapuna Winter Lights, ElementalAKL, French Rendez-vous, Michael Goodwin, Dan Green.

Tāmaki Makaurau, Auckland's Elemental AKL Festival is back this July with a captivating programme of arts, eats, and beats. From 20 July - 6 August, more than 30 free and ticketed events will transform eateries and bars, theatres, and public spaces into an urban oasis of exciting experiences.



COMING NEXT..

