

The PumpHouse Theatre

Venue & Technical Information

Revised 19 May 2023

Please ensure that you have the latest version of this document as provided at <http://pumphouse.co.nz/resources/>

Genevieve Becroft Auditorium Specifications

Stage Dimensions	
Width of Stage	10.6 metres
Depth of Stage	7.5 metres
Stage Height	4.2 metres (to underside of curtain tracks) 4.57 metres (to lighting grid)
Height - Floor to Stage	0.6 metres (from auditorium floor to stage)

Stage Entrances	
Stage Left	
Entrance Width	0.75 metres
Distance from front of stage	3 metres
Stage Right	
Entrance Width	1.8 metres
Distance from front of stage	1.95 metres

Loading Dock	
Height	2 metres (door to theatre 2.5 metres high @ peak of arch)
Width	2.3 metres wide

Maximum Stage Loadings	
Stage	Maximum evenly distributed load of 5 kPa (or approx. 500kg/m ²) Maximum single point load of 2kN (or approx. 200kg)
Lighting bars	Maximum load rating of 60 kg/m (e.g., 30kg mover rigged every 0.5m) (Refers only to poles with power outlets fitted)

Note

- There is no wing space – Wings can be set with tabs/masking.
- The stage is not raked.

Working at Height Equipment

- Easy Access brand Aluminium Mini-Mobile Scaffold (model MM410) for work over the stage and removeable seating stalls area
- Extension ladder with rubber-soled shoes for work over the raked seating with appropriate Health and Safety plan provided by user

Ladders are not to be used for working at height over the stage or removeable seating stalls area.

Seating

Fixed	123
Removable – Stalls	53
Balcony	2 x 8 seats. Suitable for adults only. Conditions apply.
Total	192 (including 2 x House Seats per performance)

Miscellaneous

- Back Stage Relay with speakers in the dressing room and mezzanine
- Stage Manager's Talkback System: 5 wired EM-201 ALTAiR beltpacks/headsets (5 stations: Stage Left, Stage Right, Foyer, 2 in Tech Booth)

Drapes – GBA

- 1 x House Curtain – Red
- 3 x Stage Right Tabs – Black
- 3 x Stage Left Tabs – Black
- 1 x on stage Black Curtain
- 1 x Cyclorama

Drape	Size	Min distance	Max distance
House Curtain	Full stage	0.97m	1.5m
Stage Right Tabs	0.7m to 3.0m width	1.1m	6.5m
Stage Left Tabs	0.7m to 3.0m width	1.1m	6.5m
Black Curtain	Full Stage	4.0m	7.0m
Cyclorama	Full Stage	4.9m	7.5m

- Minimum and maximum distances are as measured from the front of the stage. Minimum Tab positions assumes no House Curtains. Tabs cannot be placed forward of the House Curtain.
- In some cases, the position of drapes is restricted by seismic strengthening.
- Any combination of drapes can be moved and/or removed. The Red House Curtain must remain hanging at all times but can be repositioned behind the Cyclorama. Charges apply.

Audio Equipment – GBA

Unless otherwise stated the following audio equipment is included as standard with your hire. Please do not attempt to change speaker/amplifier configuration without first speaking with a PumpHouse technician.

Mixing Consoles

- Allen & Heath Qu-24 digital mixer
- Mackie Pro FX12 mixer (available on request)

Amplifiers

- Alto x23 Crossover
- FOH Left & Right: Phonic Max1500
- Sub Left & Right: Ashly KLR-2000
- FOH Centre: Proel PRL900
- Foldback Left & Right: B52 US-1200

Amplifier input section is dual XLR 3-pin balanced and 6.3mm mono jack

Speakers - *Speaker connections and amplifier outputs are Neutrik speakON*

- 2 x Proel TFL 12P8 Flying Series (300W continuous, 600W peak)
- 2 x Proel TFL 115SP4 (Sub-Woofer – 400W continuous, 800W peak)
- 2 x Proel TFL 10P4 (foldback speakers – 200W continuous, 400W peak)
- 2 x Turbosound Milan M12 1100W powered speakers (additional charges apply) – XLR and 6.3mm mono jack inputs

Microphones

- 4 x Sennheiser System Wireless microphones (additional charges apply)
 - handheld, lapel or head-worn options
- 2 x Audio-Technica ATM510 Cardioid Dynamic Vocal
- 1 x Audio-Technica ATM650 Hypercardioid Dynamic Instrument
- 1 x Audio-Technica AT2020 Cardioid Condenser Instrument
- 2 x Wharfedale Pro KM-3 Cardioid Condenser Instrument
- 1 x Audix f50S Cardioid Dynamic Vocal, with switch

Miscellaneous

- 2 x Proel Active D.I. Box (DB1-A)
- 2 x Proel TN0804 8-in 4-out 20 metre XLR stage box
- 1 x Sony BDP-S1500 Blu-ray DVD Player

Grand Piano

- Blüthner Grand Piano
- Piano Tuning (if required) \$150.00 – \$180.00

Note: Only PumpHouse certified technicians are permitted to tune the piano.

We use Jenkin Piano Service in Hillcrest.

Audio Visual Equipment – GBA

- Epson EB-2250U ceiling-mounted projector – 5000 lumen brightness. Video inputs:
 - VGA + 3.5mm audio jack input from technical booth, and from stage level with VGA extender – 1440 x 900 resolution, 16:10 native aspect ratio
 - HDMI input from technical booth – 1920 x 1080 resolution (1080p), 16:9 aspect ratio

Lighting Equipment – GBA

Unless otherwise stated the following lighting equipment is included as standard with your hire.

Control Systems

- 1 x Theatrelight Cuemaster 120 console
- 1 x Theatrelight DMX-Link Soft-Patch console
- 1 x LF25 Lightfactory 128 DMX channel PC-based lighting control interface
(interface provided for self-directed use only)

Dimmers

- 5 x Pulsar data-packs = 84 channels (hard wired)
- 1 x Portable Theatrelight TL PPK 12-10

Standard Lighting Rig

The standard rig may be adjusted to suit your needs but must be returned to the standard configuration (including patch and focus) when you pack out. A current lighting plan can be found at <https://pumphouse.co.nz/resources/>

- 8 x 1200w Selecon PC Rama 5°-60°
- 2 x 1000w Selecon Pacific Zoomspot 23°-50°
- 4 x Selecon PLCYC LED Cyc
- 4 x Selecon SL ePAR 180 LED
- 2 x Par56 COB LED

Lighting Fixtures

- 6 x 500w Selecon Fresnel *(Barn doors and gels cannot be attached to these fixtures)*
- 2 x 650w Selecon Fresnel *(Barn doors and gels cannot be attached to these fixtures)*
- 7 x 1000w Selecon Fresnel
- 8 x 1200w Selecon Fresnel Rama 7°-50°
- 4 x 650w Selecon PC Acclaim 4°-64°
- 2 x 1200w Selecon PC Rama 5°-60°
- 4 x 1000w Selecon Cyc Lui
- 2 x 650w Selecon Pacific Zoomspot 23°-50°
- 4 x 1000w Selecon Pacific Zoomspot 23°-50°
- 2 x 1000w Selecon Pacific Fixed Beam 90°
- 7 x 1000w Parcan - Par 64
- 1 x 1200w Selecon Follow Spot

Power Supply – GBA

Main Supply

- 160-amp three phase

Three Phase Sockets – 32 amp

- 2 x in Dimmer Cupboard
- 1 x in Control Room

Single Phase Sockets – 10 amp

- 12 x on Catwalk switched from Control Room
- 14 x in Control Room
- 8 x on Stage
- 4 x front of Stage
- 4 x practical over Stage switched from Control Room
- 3 x Auditorium (2 under seat F7, 1 at top of stage right stairwell)

Dedicated Audio Sockets – 10 amp

- 8 x in Control Room
- 4 x on Stage
- 2 x on Catwalk

Lighting Equipment – Coal Bunker Studio

- 1 x Theatrelight Starlet 12 lighting control console
- 1 x LF25 Lightfactory 128 DMX channel PC-based lighting control interface
(interface provided for self-directed use only)
- 1 x D-SPLIT 4 port isolated DMX splitter
- 4 x Theatrelight TL-F500 LED Fresnel fixtures
- 4 x Chauvet SlimPAR Tri 7 IRC LED fixtures

Audio Equipment – Coal Bunker Studio

- 1 x Phonic AM240 2-Mic/Line, 4-ST Compact Mixer
- 1 x Digitech Compact 2 x 20WRMS Stereo Amplifier
- 2 x Ceiling Mounted 5” Indoor/Outdoor Speakers, 30W, 100Hz-20kHz Frequency Response
- 1 x VONYX WM82 Series Wireless UHF Microphone

Audio Visual Equipment – Coal Bunker Studio

- 1 x ViewSonic PJD5123 DLP Projector – 2700 lumen brightness. Video input:
 - VGA + 3.5mm audio jack input – 800 x 600 resolution, 4:3 native aspect ratio
- 1 x Acer P1165 DLP Projector – 2400 lumen brightness. Video input:
 - VGA + 3.5mm audio jack input – 800 x 600 resolution, 4:3 native aspect ratio

Power Supply – Coal Bunker Studio

All non-dimmable, 10-amp single phase sockets

- 4 x ceiling-level
- 3 x wall-mounted

Lighting Equipment – Amphitheatre

- 1 x TheatreLight Portable Digital Dimmer Pack = 12 channels

Power Supply – Amphitheatre

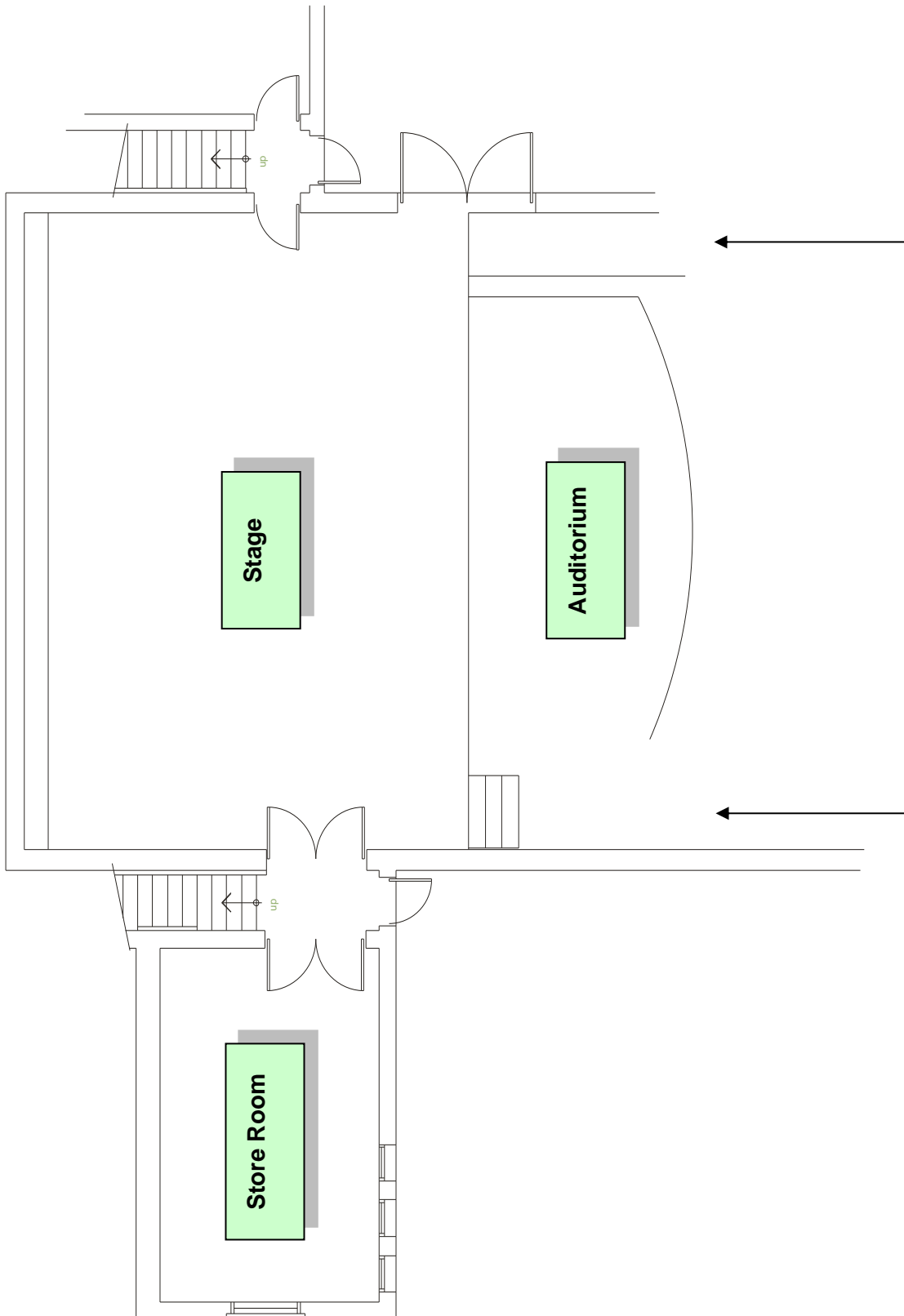
Three Phase Sockets – 32 amp

- 2 x in Wet Room

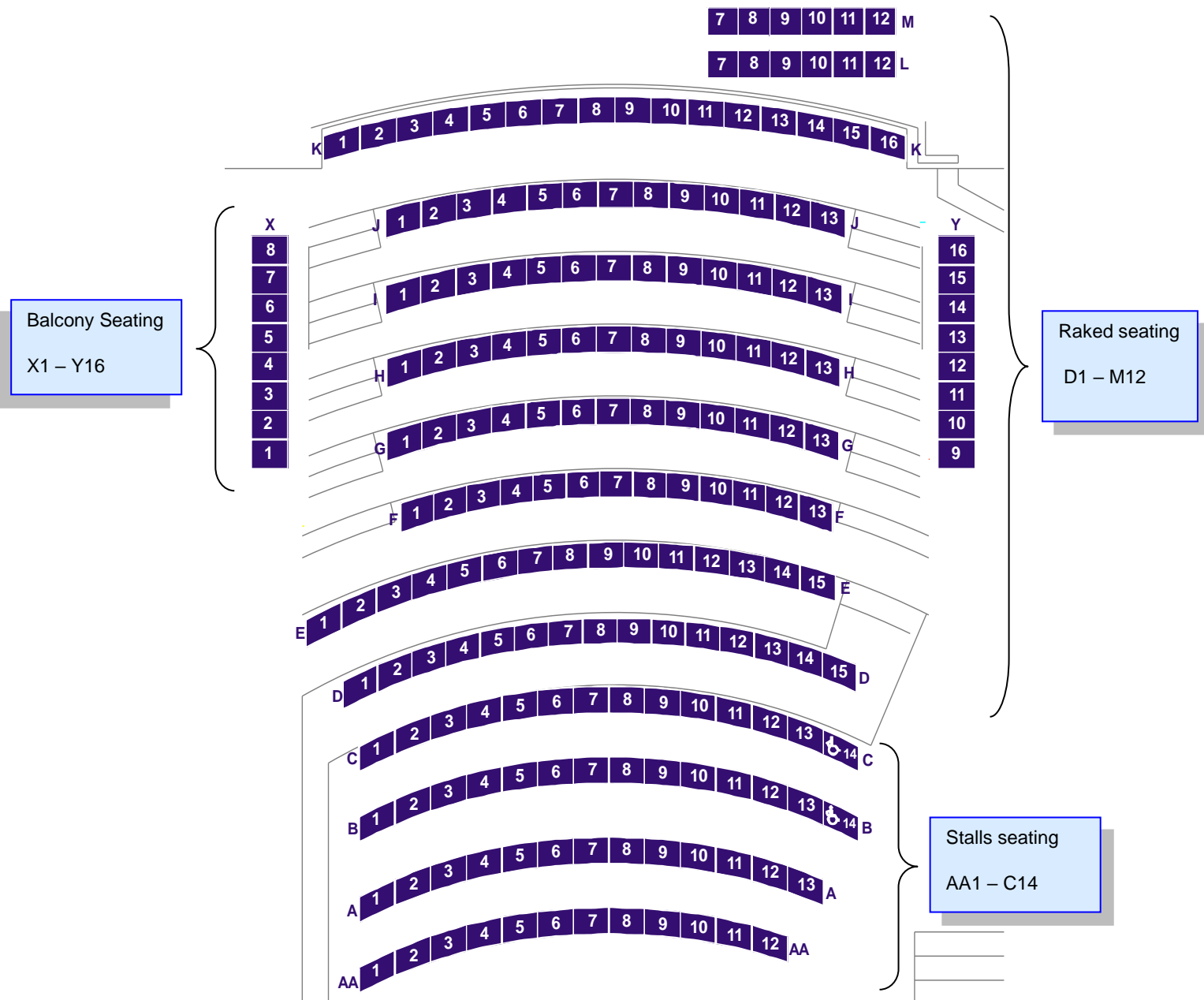
Single Phase Sockets – 10 amp

- 5 x on roof above the Stage
- 15 x in Control Room
- 4 x in Wet Room (non-dimmable)
- 2 x on Stage Right (non-dimmable)

Stage Plan – GBA



Seating Plan – GBA

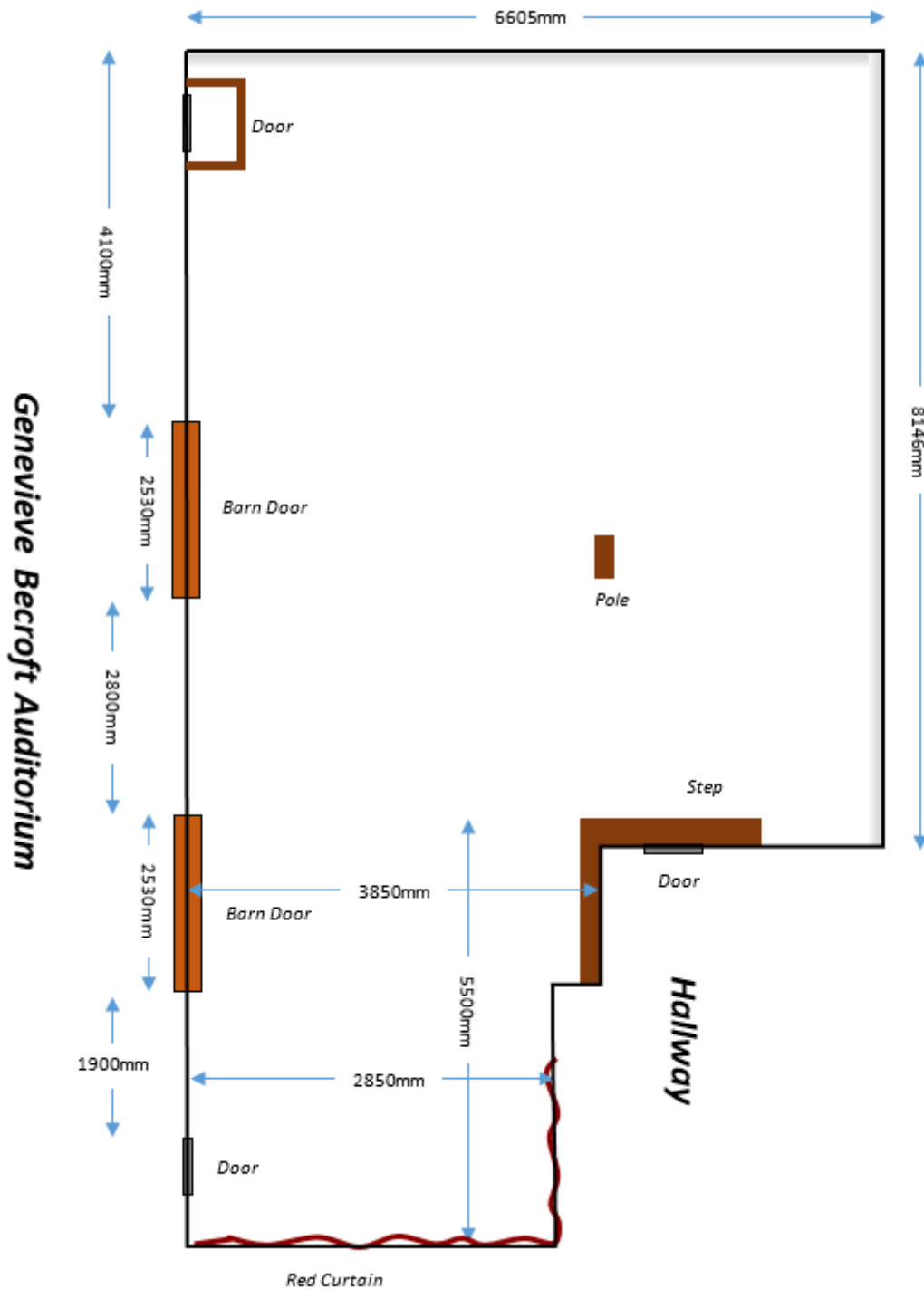


STAGE

Seating:

Fixed	123
Removable – Stalls	53
Balcony	2 x 8 seats. Suitable for adults only. Conditions apply
Total	192 (including 2 x House Seats per performance)

Floor Layout – Coal Bunker Studio



Seating: Up to 50 removeable chairs

Staging/Seat tiering: Four 1200 x 2400mm moveable platforms – 170mm tall, raiseable to 310mm with legs