

CHOCOLATE & CARNAGE THEATRE PRESENTS

LEMONS LEMONS

LEMONS LEMONS

LEMONS BY SAM
STEINER



A LOVE STORY THAT WILL LEAVE YOU *SPEECHLESS*

LEMONS LEMONS LEMONS LEMONS LEMONS LEMONS LEMONS LEMONS LEMONS LEMONS LEMONS LEMONS
LEMONS LEMONS LEMONS LEMONS LEMONS LEMONS LEMONS LEMONS LEMONS LEMONS LEMONS LEMONS
LEMONS LEMONS LEMONS LEMONS LEMONS LEMONS LEMONS LEMONS LEMONS LEMONS LEMONS LEMONS

DIRECTOR'S NOTE

What can you say in 140 words? Sometimes it doesn't matter how many words are said, sometimes it's more important what you are trying to say or what has been left unsaid. I thought about trying to direct this play using only 140 words per rehearsal but as much as the actors would have appreciated that at times, I decided to settle on writing this director's note in 140 words instead. Lemons is an interesting text to explore and the actors and I have had many long and engaging discussions throughout the last couple of months, some of them were even about the play. It's not just a play about words it's a play about time, time and how we use it. It's a play about the power of your words and those with the power to take them away.

-Rory Janssen, Director



KAIHĀPAI O MURI BACKSTAGE CREW

RORY JANSSEN
DIRECTOR



Both on and off stage, Rory has been involved in various shows across Tāmaki Makaurau. He has set-up and run drama groups for people with disabilities and participated in festivals such as InterACT, Going West and Auckland Fringe. As a director, he always looks forward to creating genuine and compelling pieces of theatre and working with actors to craft moving and truthful performances. He recently co-directed an original work by fellow writer/director Faith Ward as part of the Auckland Pride Festival (2024). His own original written and directorial work includes Swallow the Fly (2022) as part of the Auckland Fringe Festival, as well as Only Insecure Pussies Write Shit on Toilet Walls (Coal Bunker Studio, 2019).

JULIA RUTHERFORD
LIGHTING DESIGN



Julia has experience in most areas of theatre but has a clear favourite in technical design. Julia especially loves creating unconventional designs in unconventional spaces and digging deep into the meat of a good story.

She has been a keen theatre creator since high school; this is what fueled her decision to move to Australia to complete her B.A in Design for Theatre and Television at Charles Sturt University.

She currently splits her time between freelancing and her day job at Kenderdine Electrical. She has worked with such companies as Crossfade Productions, Act One Productions, The Classic Theatre Company, The Pumphouse Theatre, Whoa Studios, Foolish Wit and of course Chocolate & Carnage.



@chocolatecarnage



@chocolatecarnage



KIRIWHAKAARI ACTORS

JOCELYN CHRISTIAN
BERNADETTE



Jocelyn has appeared in drama and comedy roles on New Zealand and international screens since 2002. Recent credits include the films *Avatar the Way of Water*, *In Dark Places*, *Only Cloud Knows*, and television drama credits include, *Shortland Street*, *Murder is Forever*, and *Wilde Ride* as well as voicing characters in *Barefoot Bandits 2* and *Quimbo's Quest*.

Her stage credits include *Rushing Woman*, a new solo show, *Anne Elliot* in an adaptation of Jane Austin's *Persuasion* and *Caroline Bingley* in *Pride and Prejudice*.

Jocelyn is also a screenwriter and Voice-over artist. She lives with her composer husband and three children.

MATTHEW DIESCH
OLIVER



Matthew has been acting on stage and screen in Auckland since 2012 when he played Mr MacIntosh/Pug in *Peninsula*. He also works as a director, an intimacy coordinator and photographer.

His most recent projects include directing the New Zealand premieres of *NSFW* and *The Welkin*, playing Frank in *Educating Rita*, Arthur in *An Unseasonable Fall of Snow* and appearing in the multi-award winning short film *Means To An End*.



@chocolatecarnage



@chocolatecarnage

LEMONS LEMONS LEMONS LEMONS LEMONS LEMONS LEMONS LEMONS LEMONS LEMONS LEMONS LEMONS
LEMONS LEMONS LEMONS LEMONS LEMONS LEMONS LEMONS LEMONS LEMONS LEMONS LEMONS LEMONS
LEMONS LEMONS LEMONS LEMONS LEMONS LEMONS LEMONS LEMONS LEMONS LEMONS LEMONS LEMONS

KAIWHAKAPUTA PRODUCERS

MARK WILSON
PRODUCER



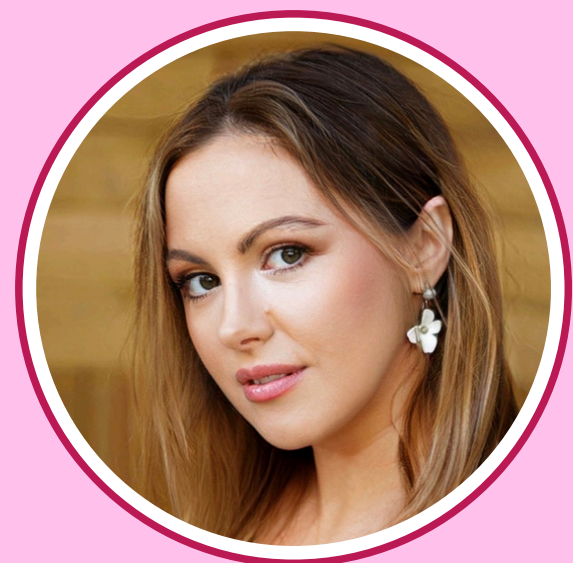
Mark (Ngāti Tūwharetoa) is a multidisciplinary artist: a playwright, an actor and co-owner of Chocolate & Carnage Theatre.

They have decades of experience on stage in many varied and exciting roles.

Their love of storytelling expands into numerous art forms such as theatre, D&D, and improv. This has recently led them to writing their first ever play '.co.nz' which had two incredibly successful seasons during Matariki 2022 and Matariki 2023.

Mark has enjoyed bringing Chocolate & Carnage Theatre to life over the past 3 years, and is excited about the company's kaupapa and what they can bring to the theatre scene.

MEG ANDREWS
CO-PRODUCER & MARKETER



Meg is an award-winning actor, director, and theatre marketer who has enjoyed a scrumptious theatre-filled life. Meg trained at two drama schools and has performed with Tim Bray Theatre Company, toured Aotearoa with The Ugly Shakespeare Company as their first female actor, and has appeared on TV in Shortland Street and My Life is Murder.

She has directed vibrant pieces: Lovepuke, The Vagina Monologues, an all-female Taming of the Shrew and more recently she directed the premiere of .co.nz for Matariki.

Meg is an advocate for empowering Māori, Queer, and Wāhine led stories - stories that she and her partner bring to the stage through their company, Chocolate & Carnage Theatre.



@chocolatecarnage



@chocolatecarnage

HE MIHI NUI KI A KOE!

RURU
LOCHIE & GRACE
SOYOKAZE PRODUCTIONS
JAMES BELL
LIAM AND DAN PRESLING
BEVAN READ
LAUREN WILSON
EMMA DUFFY
BEN & ANNEKE S
NEAL CAFFERY
NEVILLE AND MARGARET
CHRISTIAN
STEPHEN HOOD
BRESHE ANDREWS
NATASHA LILLIE ANDREWS
BRIAN GILL
BRIAR COLLARD
AMBA BARKER
EMMA BISHOP
MIKE DALEY
NICK K
JESS BENNETT
LISA BRICKELL
LAURA LOVEGROVE
DAISY MCMAHON

THE PUMPHOUSE THEATRE
NICK VINCE
LUKE GOLDS
PAULA WILSON
PRU ANDREWS
RICHARD KITCHEN
MIKE NEWPORT
DUNCAN ROSS
CHRISTINE BALL
ERIC STRACK
ROSHEEN LESLIE
GRAMMA AND PAPA RAWSON
JORDAN SMITH HENARE
GABY REID
JAZ, RYAN, SAACHI & ARDEN
O'KANE
DAVE ANDREWS
TASH LAY
FIONA DIESCH
GEORGIE OULTON
ANDY KNIGHT
SARAH ROBINSON
TANYA WHEELER
AND ALL OUR WONDERFUL
ANONYMOUS DONORS

A BIG ZESTY THANK YOU TO OUR FRIENDS AT FOOLISH WIT WHO HAVE PLAYED A BIG PART IN GETTING LEMONS TO THE STAGE! SUPPORT THEM BY BOOKING TĪKITI TO THEIR BOLD, SURPRISING, BOISTEROUS, AND TIMELY VERSION OF PRIDE & PREJUDICE. **ME MAHI TAHI TĀTOU. MŌ TE ORANGA O TE KATOA.**





PHOTOS BY JAMES BELL



PHOTOS BY JAMES BELL